



# Model A205

## User Instruction



## Dear Customer!

---

Dear Customer!

Thank you for choosing Mil-tek. We hope you will be satisfied with our product throughout its service life.

For your safety and that of others, and to achieve the best results, we ask that you carefully read the following pages before using your new Mil-tek product.

If you have any questions, you are welcome to contact your nearest local Mil-tek representative or visit [www.mil-tek.com](http://www.mil-tek.com) for further information.

Mil-tek Danmark A/S  
Torstedvej 4-8  
DK-6990 Ulfborg  
Denmark  
Phone : +45 9675 8000  
Fax : +45 9675 8100  
E-mail : [info@miltek.dk](mailto:info@miltek.dk)  
[www.mil-tek.com](http://www.mil-tek.com)



# Table of Contents

---

Safety Regulations	5	Locking unit, drawing	40
Technical Data	7	Locking unit, parts list	41
CE Declaration of Conformity	9	Upper door locking lever, drawing	42
Transport & Installation Guide	10	Upper door locking lever, parts list	43
Lockout / Tagout Procedure	15	Pneumatic diagram	44
Manual for Operation	17	Valve for closing hinge, drawing	45
Emptying the Waste Press	19	Shut-off valve, drawing	46
Maintenance	23	Shut-off valve, parts list	47
Checklist of maintenance	26	Valves for activation, drawing	48
Safety related control system	28	Bale out Indicator, drawing	49
Troubleshooting	30	Valve for bale out indicator, drawing	50
Drawings and parts lists	31	Valve for low press, drawing	51
Pressing chamber, complete drawing	32	Valve for bottom door, drawing	52
Pressing chamber, complete parts list	33	Valve for bottom door, parts list	53
Lower and upper door, complete drawing	34	Warranty	55
Lower and upper door, complete parts list	35	Service check	56
Cylinder and press plate, complete drawing	36		
Cylinder and press plate, complete parts list	37		
Control unit, drawing	38		
Control unit, parts list	39		



# Safety Regulations

---

## REGULATIONS FOR USING THE WASTE PRESS

The Waste Press may only be used to press cardboard, paper, plastic, foam plastic, textiles and similar soft materials.

Spray cans, aerosol cans or gas containers, cans with dangerous material or solid materials must never be pressed in this Mil-tek product as this can involve danger of life or cause an explosion.

Furthermore it is prohibited to press solid materials such as metal, wood, glass etc. as this can cause damage to the machinery as well as cause personal injury.

## RESPONSIBILITY

Mil-tek Denmark declines any liability and responsibility if any alterations or if otherwise adjustments are made to the machine according to the manual and maintenance manual, and including any damage to the safety valve.

Mil-tek and its Sales Representatives and distributors cannot be held liable for any adjustments or modifications, which are not shown or stated in this manual.

Under no circumstances may any changes be made to this machine or the use of any unoriginal spare parts without written consent from the Mil-tek manufacturer. Any changes or the use of unoriginal parts may result in personal injury and are therefore prohibited.

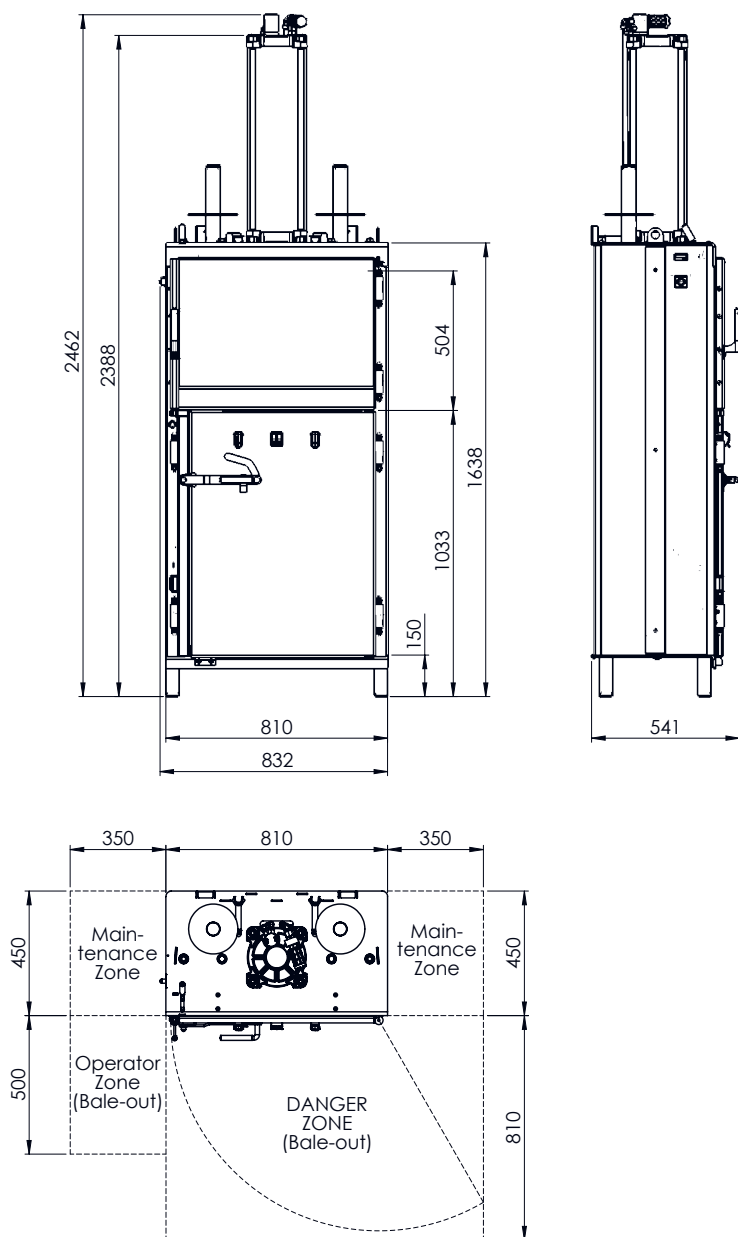
Mil-tek cannot be responsible for the use of the Waste Press, if anything other than Mil-tek Original Banding is used to tie the bales, as Mil-tek Denmark cannot guarantee for the quality and origin of any alternative banding!

## USER MANUAL IN ORIGINAL ENGLISH VERSION

This user manual is translated from English. As a part of Mil-tek's policy for keeping the environment, Mil-tek do not deliver the original

version of the manual without any specific request from customer or authorities.

If the original version is needed for any purpose, please send a request per e-mail to [info@miltek.dk](mailto:info@miltek.dk) or call Mil-tek Denmark at +45 9675 8000.



Measurments of correct instalation

# Technical Data

Technical data	
Power source:	Compressed air, 8-10 bar
Machine height (mm):	2462
Machine width (mm):	835
Machine depth (mm):	541
Net. weight:	275 kg
Noise level:	< 70 dB (A)
Pressure:	2500 kg at 8 bar
Size of bale: H x W x D (mm):	880-1000 x 655 x 450
Weight of bale:	Plastic up to 120 kg Cardboard up to 50 kg
Automatic bale-out system:	No
Approvals:	CE, EN16500





# CE Declaration of Conformity



EU declaration of conformity to directive 2006/42/EU  
- The machinery directive Annex II A.

*EU Overensstemmelseserklæring  
- Maskindirektivet 2006/42/EU Bilag II A.*



<b>Name of Manufacturer:</b> <i>Fabrikantens navn:</i>	Mil-tek Danmark A/S
<b>Full Address of Manufacturer:</b> <i>Fabrikantens adresse:</i>	Torstedvej 4-8, DK-6990 Ulfborg, Danmark
<b>Name and address on the person authorized to compile the technical dossier:</b> <i>Navn og adresse på den person, som har bemyndigelse til at samle det tekniske dossier:</i>	Kristian Skannerup Torstedvej 4-8, DK-6990 Ulfborg, Danmark
<b>Description of the machine:</b> <i>Beskrivelse af maskinen:</i>	Waste Press <i>Affaldspresser</i>
<b>Commercial designation:</b> <b>Generic denomination:</b> <b>Function:</b> <i>Handelsbetegnelse:</i> <i>Generisk betegnelse:</i> <i>Funktion:</i>	Machines for compacting waste materials or recyclable fractions - Vertical baling presses  <i>Maskiner til komprimering af affaldsmaterialer eller genanvendelige fraktioner</i> <i>- vertikal ballepresser</i>
<b>Model / Type:</b> <i>Model / Type:</i>	A205
<b>Serial Number:</b> <i>Serienummer:</i>	A205-ST-1-0-0000 to A205-ST-1-0-9999
This machine is in conformity with the essential health and safety requirements of 2006/42 EU - The machinery directive	
<i>Denne maskine er i overensstemmelse med de væsentlige sundheds og sikkerheds-bestemmelser i Direktiv 2006/42 EU - maskindirektivet</i>	
<b>Notified Body:</b> <i>Bemyndiget organ:</i>	Not relevant <i>Ikke relevant</i>
<b>Harmonized C standard:</b> <i>Harmoniseret C standard:</i>	EN 16500 - Machines for compacting waste materials or recyclable fractions - Vertical baling presses - Safety requirements
<b>Other standards:</b> <i>Andre anvendte standarder:</i>	The standards used in addition to EN 16500 <i>De anvendte standarder er anvendt som supplement til EN 16500</i>
<b>Safety related control systems:</b> <i>Sikkerhedsrelaterede styresystemer:</i>	EN ISO 13849-1:2006 EN ISO 13849-1 / AC 2009 Safety of machinery - Safety-related parts of control systems - Part 1: General principles for design  EN ISO 13849-2:2012 Safety of machinery - Safety-related parts of control systems - Part 2: Validation
<b>Place, date:</b> <i>Sted, dato:</i>	DK-6990 Ulfborg, 1 dec. 2021
<b>The empowered person:</b> <i>Den person, som er bemyndiget til at forpligte fabrikanten:</i>	 <b>Kristian Skannerup</b>

# Transport & Installation Guide

---

## Danger of damage

The Waste Press is only to be transported and stored in the original packing from the manufacturer. Improper transport can lead to damage or functional errors of the Mil-tek Waste Press. Only transport the Waste Press upright with a fork lift or pallet lift. The fork lift or pallet lift must have a minimum capacity of 500 kg.

- Bring the Waste Press to its installation site with the fork lift or pallet lift.
- Minimum transport height 2470 mm.

## Setting up the Mil-tek Waste Press

### Floor requirements

The surface must be:

- solid and horizontal surface.
- must withstand a point load of at least 160 kg.
- maximum weight of the Mil-tek Waste Press with bale is 400 kg.

### Site requirements

The site can be indoors or outdoors.

The site must:

- be covered and dry.
- be sufficiently protected against weather conditions when outdoors.
- temperature +2°C to +50°C max. Contact your Mil-tek supplier if your site is below +2°C.

### Pneumatic supply requirement

- compressed air, lubricated or nonlubricated.
- operating pressure 8 - 10 bar.
- If the air supply is lubricated, it is important to keep lubricating after once started because the first oil will wash out the grease by which the components are pre-lubricated (oil for lubrication must be ACID-FREE).
- In areas with high humidity, it can be necessary to mount an auto drainer on the air supply. Too much moisture in the air supply can affect the performance of your Waste Press.

### Strapping requirement

- Mil-tek original banding, 13 mm.
- Tensile strength for at least 380 kg.
- For material with high expansion or with sharp edges, we recommended to use Mil-tek original banding 19 mm, with tensile strength for at least 725 kg.

Mil-tek original banding 9 mm, with tensile strength for at least 275 kg can be used if this machine ONLY will be used for pressing cardboard.

# Transport & Installation Guide

---

## Unpacking, installation and taking into operation

- remove the original packing from the Mil-tek Waste Press.
- check completeness of all items delivered (see delivery note).
- install the Mil-tek Waste Press on its site.

## Installing the Mil-tek Waste Press

1. Place the Waste Press on a solid and horizontal surface and secure the Waste Press to the wall (fig. 1), or to the floor (fig. 2).
2. Mount the Main Switch (fig. 3).
3. Mount the 2 enclosed rolls of banding. (fig. 4)
4. Check that the band-stop is correctly in place (fig. 5).
5. We suggest you fix the banding to keep it in a secure position in the band holders at the bottom of the press (fig. 6 + 7).
6. Connect the air hose (fig. 8).
7. The Waste Press is then connected to compressed air, 8 - 10 bar and is ready to use (fig. 8).
8. Mount the left side cover (fig. 9).

If static material is compacted in the Bale Press or the site requirements demand that the machine is connected to the buildings earth connection, - then the bolt for earth connection can be found on the lower back part of the machine (fig. 10).

Please read the "Manual for operation" carefully.

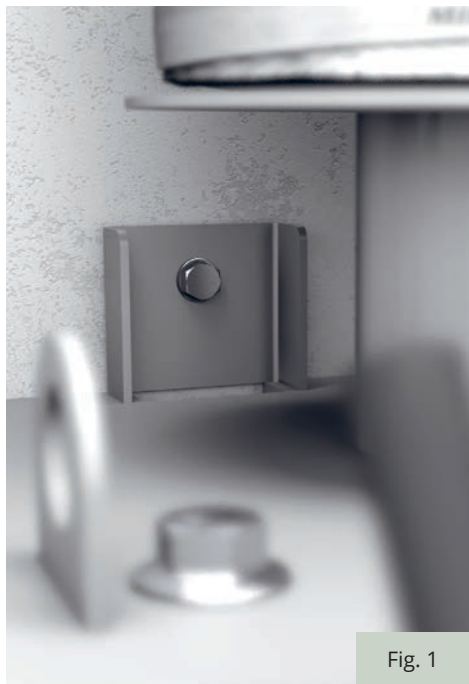


Fig. 1



Fig. 2

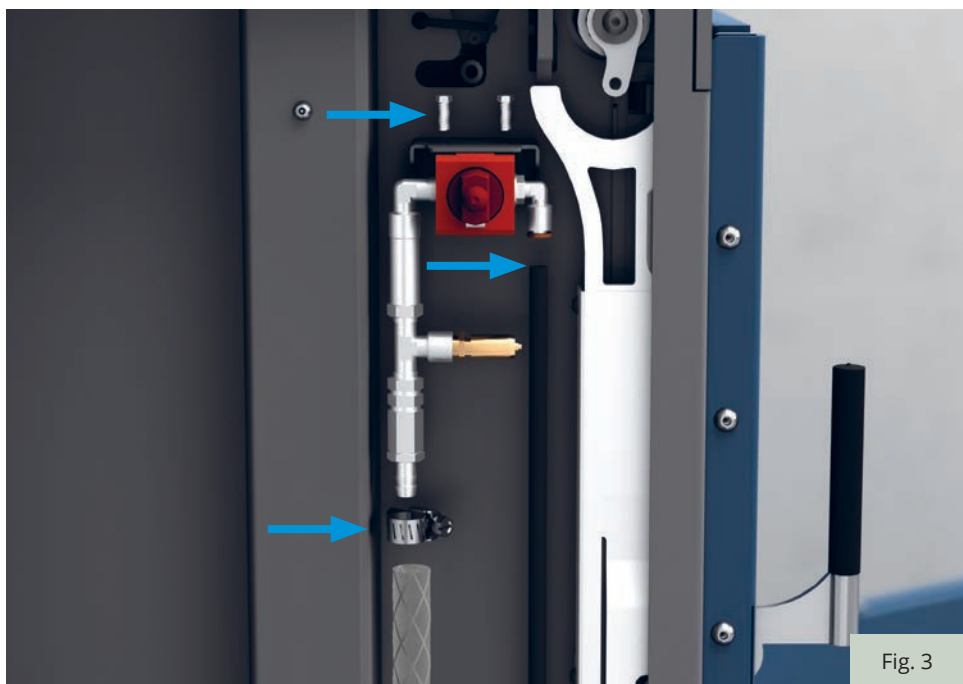


Fig. 3

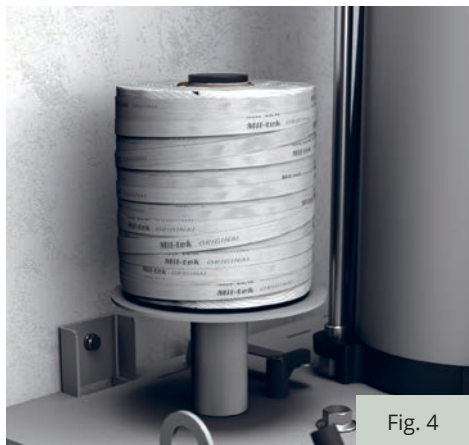


Fig. 4

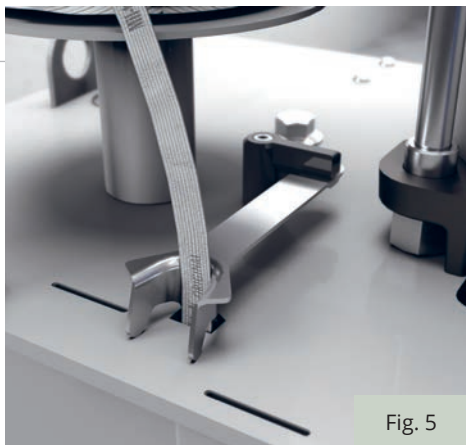


Fig. 5



Fig. 6



Fig. 7



Fig. 8



Fig. 9



Fig. 10



Fig. 11

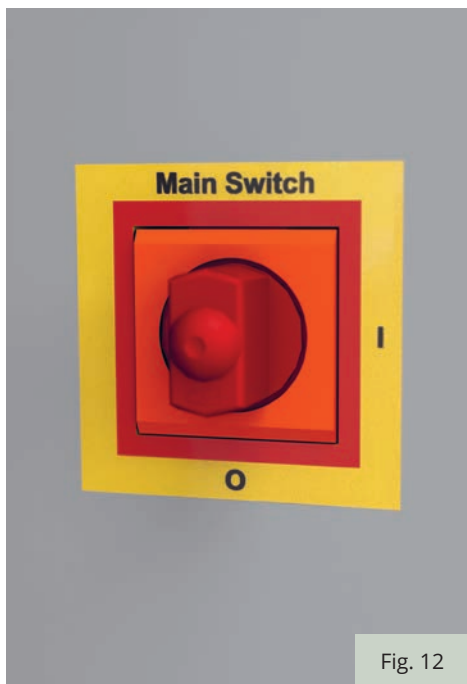


Fig. 12



Fig. 13



Fig. 14



Fig. 15

## Lockout / Tagout Procedure

---

1. Close upper door and turn the door handle into closed position (fig. 11)
2. Disconnect the air supply by turning the lock-out valve from open (fig. 12) to lock position (fig. 13)
3. The Waste Press is now disconnected from the power source. The lock-out valve can be locked with a padlock (fig. 13) to ensure that the air cannot be connected by mistake. The Waste Press can now be serviced without additional risk.

### **Option if auto drainer is mounted as accessories**

Follow the lockout/tagout procedure as described above in points 1-3, and:

4. Disconnect the air supply by pressing down the red bottom (fig. 14).
5. The lock-out valve can be locked with a padlock (fig. 15) to ensure that the air cannot be connected by mistake. The Waste Press can now be serviced without additional risk.





# Manual for Operation

---

Please read the complete "Manual for operation" carefully.

1. Close the lower door and place the banding straps in the band holder. (fig. 16)
2. Fill with cardboard - paper - plastics etc. Turn the cardboard upside down to optimize the pressing effect. (fig. 17)
3. Close the upper door of the Waste Press, by pushing the handle forward. (fig. 18)
4. Pull the lever of the 3 Position Selector forward into the P (pressing) position. (fig 19).



## **Warning!**

Check all the waste to enter the press to ensure that it contains no undesired materials such as: Metallic material, wood, glass, spray-cans, gas bottles/containers or cans containing any type of fluid liquid etc.



Fig. 20



Fig. 21



Fig. 22

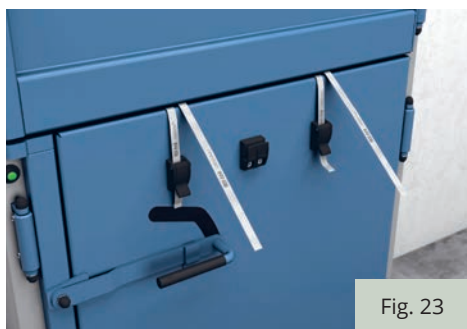


Fig. 23



Fig. 24



Fig. 25



Fig. 26

# Emptying the Waste Press

---

1. When the indicator turns to green at the left side of the door, it's time to bale out (fig. 20).
2. Open the upper door and pull out the banding straps far enough to cover the pressed waste. Cut the banding to a suitable length with the cutter on the lower door so that they hang out between the doors (fig. 22 + 23).

*Notice: The pressing plate needs to be in the top position before you can open the top door.*

3. Place the banding straps and close the upper door to start the pressing cycle (fig. 22 + 23).
4. Pull the straps as much as possible by giving the straps a good tug, to make sure there is no slack when the pressing plate is activated (fig. 23).
5. Open the bottom door when machine have pressed the material for 5-30 sec. (fig. 24) Please refer to the video for additional information.
6. Make sure you have a good grip on the lower door handle before opening, in case of any excess pressure from the material inside the machine. (fig. 25 + 26)
7. Release the pressure from the door slowly and carefully, while at the same time stepping to the left hand side of the machine. The door will start to open once the closing device is between 90-100°. (fig. 26)



## **Warning!**

The lower door can spring open due to the force of the compacted material inside, so be careful when opening, - make sure you have a good grip on the lower door handle!



Fig. 27



Fig. 28



Fig. 29



Fig. 30

## Emptying the Waste Press

---

8. Now tie the bale with the straps (fig. 27). Tie a double knot, to ensure that the knot does not slide up when the pressing plate return to top position (fig. 28).

9. To return the pressing plate, use the top door handle and let the lever of the 3 Position automatically move into R (Return) (fig. 29).

When the pressing plate is in the top position, the upper door can be opened and the bale can be removed.

10. You can now remove the bale. (fig. 30)

*Notice:*

*Place the banding in the right position before using the Waste Press again - please see transport and installation guide.*



## Maintenance

---

Cardboard or another type of material could be caught between the pressing plate and the inside of the chamber wall.

If material are caught, you will need to remove it before starting a new pressing cycles.



### **ATTENTION!**

Any material caught in between the pressing plate and chamber must only be removed from below!

Remove material and adjust steel edging on both sides of the pressing plate so they are close to the chamber wall (fig. 31).

If material is caught between the pressing plate and the in-side of the chamber wall preventing the pressing plate from fully returning to the top position and thereby preventing the top door from opening, then the caught material inside of the chamber can be loosened by flowing the below instructions:

- A. Start a press cycle by pulling the lever forward into the I (pressing) position.
  - B. After 2 seconds open the top door handle.
- Repeat this operation several times.



Fig. 33

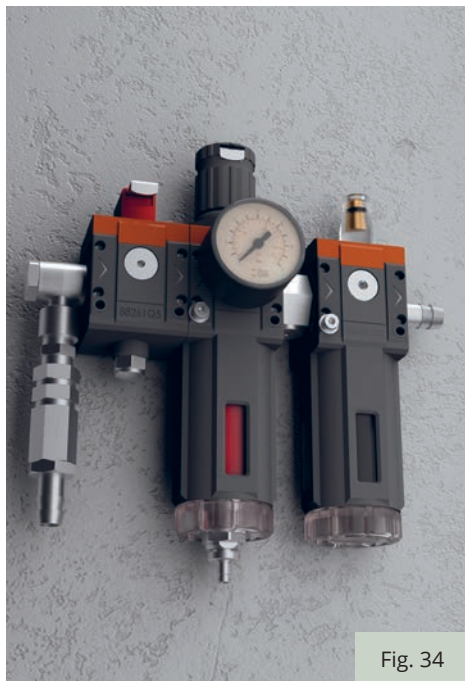


Fig. 34



Fig. 35



Fig. 36



# Maintenance

---

## **IMPORTANT!**

**Too much moisture in the air supply can affect the performance of your Waste Press.**

This can be avoided by the following:

A) Draining your compressor tank every 7 days. (fig. 33) (Please refer to the enclosed manual for the compressor)

B) Fit an auto drainer (fig. 34) on your air supply line (available at your supplier).

We recommend that in any situation where more than 25m of air line is used, an auto drainer should be fitted as standard. Mount the auto drainer at the special fitting on left side at the Waste Press (fig. 35).

Stroke counter (fig. 36) counts all strokes and indicates when it is time for service.

Please see "Checklist of Maintenance" page 26 and "Safety Related Control System" page 28.

## **Service in general**

In order to secure safety throughout the entire lifetime of the machine, it should be serviced at least once a year.

The yearly service may only be done by a skilled person, certified by Mil-tek DK to carried out on Mil-tek produced machines.

## Checklist of maintenance

Checklist for bale press	Daily	Yearly	Strokes
Remove caught material	X		
If necessary, adjust the steel edgings on the pressing plate	X		
Function check of safety system	X		
Check for leaks in the pneumatic system	X		
Lubrication of waste press		X	
Lubrication of the piston pole		X	
Replace quick exhaust membranes		X	
Check of safety system		X	
Yearly maintenance		X	
Replace top silencer		X	
Replace bottom silencer		X	
Replace activating valve		3 years	200.000
Cylinder - clean and grease		3 years	200.000
Replace diaphragm		6 years	400.000
Replace all valves		6 years	400.000
Replace battery in counter		6 years	400.000

- The point which have both a yearly- and a stroke-interval, will have to be performed by whatever interval that may be first.

# Checklist of maintenance

Checklist for Mil-tek compressor	Daily	Monthly	Yearly
Safety devices	X		
Electrical cables and plug	X		
Drain condensed water container or tank		X	
Function of Electrical water drainer, if mounted			X
Replace air filters			X

- For more details on the compressor checklist, see the manual for the compressor.

# Safety related control system

---

## Safety Related Control System

The Safety Related Control System architecture is category 1, performance level c in accordance with ISO 13849-1:2006. To make sure this high safety level is obtained during the machines life-time, it is very important that the Safety Related Control System is serviced in accordance with the below description:

### Function Check of the Safety Related Control System:

The function checks are carried out on an empty machine. The check must be made by a competent person, that knows the normal operation of the machine.

1. With the top door open, the lever of the 3 pos. selector should be locked in "0" off position.
2. With the top door, slightly open (approx. 2 deg. or a 10 mm opening between the top door and chamber), the lever of the 3 pos. selector should be locked in "0" off position.
3. With the top door closed and the closing hinge opened more than 90 deg. (bottom door closed), the press should not start when the lever of the 3 pos. selector is pulled into "P" press position.
4. With the top door closed and the closing hinge in closed position (bottom door opened), the press should not start when the lever of the 3 pos. selector is pulled into "P" press position.
5. With both doors closed start a pressing cycle. When full stroke is achieved, pull out the handle on the top door and make sure that the top door cannot be opened fully before the pressing plate is in the top position.
6. With the doors closed, move the lever of the 3 pos. selector from "0" to "P" and back again. Check that the cycle counter, counts the cycle.

If any failure is found during the function check, of the Safety Related Control System, the machine turned off and...

Turn off the power according to the instructions on page 14/15. Then call an authorized technician to make the repairs, before the machine is used again.

The replacement of all the safety related components must be made by a competent skilled person, certified by Mil-tec Denmark to carry out service checks on Mil-tec products.

# Safety related control system

## Service Intervals on Safety Related Components of the Control System

The interlock valve (V12 up/press and V16 low press) must be changed every 200.000 strokes or every 3 years. The interlock valves (V5 and V6 Lower Doors) must be changed every 400.000 strokes or every 6 years.

Valve:	Date:	Strokes on counter:	Done by:

# Troubleshooting

---

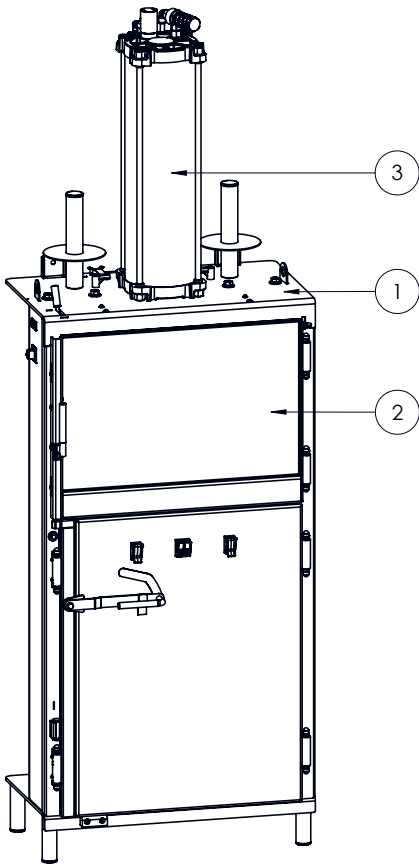
Problem:	Checkpoint number
The Waste Press does not press/function	1, 2, 3, 4, 5, 8, 9
The Waste Press is leaking air	6, 7
The pressing plate returns slowly or pumps when the Waste Press is pressing	6
The pressing plate returns slowly when the lower door is open for bale out	6
The pressing plate does not return when 3 pos. selector is in "R" pos.	8
The pressing plate returns slowly	9, 10
The pressing plate does not return fully and top door can't be opened	10
The compressor manometer is showing zero "pressure"	11

## Check points:

1. Check that the lever of the 3 pos. selector is in the "P" Press position
2. Check that the Main Switch is in "I" ON position
3. Check the air supply is plugged in
4. Check the pressure of the air supply
5. Check the air supply installation for trapped pipes or any "blocks"
6. Check for leaks in pipes and valves on the Waste Press
7. Check for leaks in pipes in the installation
8. Check the function of the Interlock valve V4 Top Door (see also Function Check of the Safety Related Control System)
9. Check the lubrication of the cylinder
10. Check for material stocked around the pressing plate (see also maintenance)
11. Check the troubleshooting section in the manual for the compressor.

# Drawings and parts lists

POS.	QTY.	ITEM NO.	PART NUMBER	DESCRIPTION
1	1	Drawing	3205-9-010	Pressing chamber complete
2	1	Drawing	3205-9-020	Lower and upper door complete
3	1	Drawing	000-9-100	Cylinder and press plate complete



ITEM: 5553205



A	First check-in	01-06-2022	PGR
Rev.:	Description:	Date:	Int.:
Model: 3205	Status: Approved	Date: 01-06-22	Constructor: PGR
Title: Waste press - Model A205			Drawing no.: 3205-9-000
File: 3205-9-000			A4 SHEET 1 OF 1
COPYRIGHT: This drawing may not be copy or reproduction in part or as a whole without the written permission of MIL-TEK - DANMARK A/S			

# Pressing chamber, complete drawing

This technical drawing is an exploded view of a pressing chamber. It shows the main frame (1) with vertical guides (29) and a base (15). The front door (1) is shown partially open, revealing internal components like the pressing mechanism (22, 26, 33, 17) and various adjustment parts (4, 31, 20, 19, 27). The left side panel (2) is shown with its mounting hardware (8, 14, 13, 11, 12, 13, 25, 30, 16, 34). The right side panel (3) is shown with its mounting hardware (25, 24, 5, 18). The bottom of the chamber features a base plate (15) with leveling feet (21) and a central support (32). A handle (28) is attached to the base. The diagram uses 34 numbered callouts to identify specific parts and components.

**Mil-tec**  
MINIMIZE YOUR WASTE

A	First check-in	01-06-2022	PGR
Rev.:	Description:	Date:	Int.:
Model: 3205	Status: Approved	Date: 01-06-22	Constructor: PGR
Title: Pressing chamber complete		Drawing no.: 3205-9-010	
File: 3205-9-010		A4	SHEET 1 OF 2
COPYRIGHT: This drawing may not be copy or reproduction in part or as a whole without the written permission of MIL-TEK - DANMARK A/S			



# Pressing chamber, complete parts list

POS.	QTY.	ITEM NO.	PART NUMBER	DESCRIPTION
1	1	32051100	3205-1-100	Press chambe
2	1	30255825	3205-5-825	Left side cover
3	1	32055826	3205-5-826	Right side cover
4	2	0001680	000-1-680	Safety and lock Bolt M16x350 mm.
5	4	0005998	000-5-998	Rubber holders for band
6	1	0009500	000-9-500	Control unit
7	1	Drawing	000-9-520	Safety dog
8	1	Drawing	000-9-530	Locking unit and counterweight
9	1	790103	00-8-V08	Shut-off valve
10	1	0008V14	000-8-V14	Bale out Indicator
11	1	0008V15	000-8-V15	Valve for bale out indtcator
12	1	0008V16	000-8-V16	Valve for low press
13	1	0008V17	000-8-V17	Valve for bottom door
14	1	690006	00-5-517	Cycle counter
15	1	880967	00-5-528	Brace f/lower door (1 cyl. machines)
16	1	880968	00-5-529	Shielding for valve
17	2	880871	0-1-505	Bandholder for banding
18	2	880834	0-5-002	U-band for rubberholders
19	2	880875	0-5-500	Fastener for bandretainer, Plast
20	2	221600	0-5-510	Band stop
21	4	880150	002-104-42-005	Tube Insert - $\varnothing 42,1$ 2,5-5,0
22	2	880020	002-104-48-005	Tube Insert - $\varnothing 48,0$ 2,5-5,2
23	1	769990	002-115-06-015	Bonding screw green - M6x15
24	4	779971A2	002-207-06-012	Torx head BH. with flang - M6x12
25	6	900314A2	002-208-06-012	Torx Pin head BH. - M6x12
26	2	770235	001-013-10-035	Hex head screw DIN 933 - M10x35
27	2	770090	001-101-06-045	Hex socket head CH. DIN 912 - M6x45
28	2	770064	001-101-08-025	Hex socket head CH. DIN 912 - M8x25
29	2	770527	001-109-06-000	Hex nut DIN 934 - M6
30	2	770009	001-207-05-010	Hex socket head BH. ISO 7380 Flange - M5x10
31	2	771046	001-414-16-030	Hex flange bolt DIN 6921 - M16x30
32	1	780490	001-508-13-000	Socket Srew SP. DIN 908 - 1/2"
33	2	771015	001-877-10-000	Spring washer DIN 127 B - $\varnothing 10,2 \times 18,1 \times 2,2$
34	4	774011	001-883-06-000	Spring split pin - 6,0 mm.



Minimize your waste

Model: 3205

Status: Approved

Date: 01-06-22

Constructor: PGR

Title: Pressing chamber complete

Drawing no.: 3205-9-010

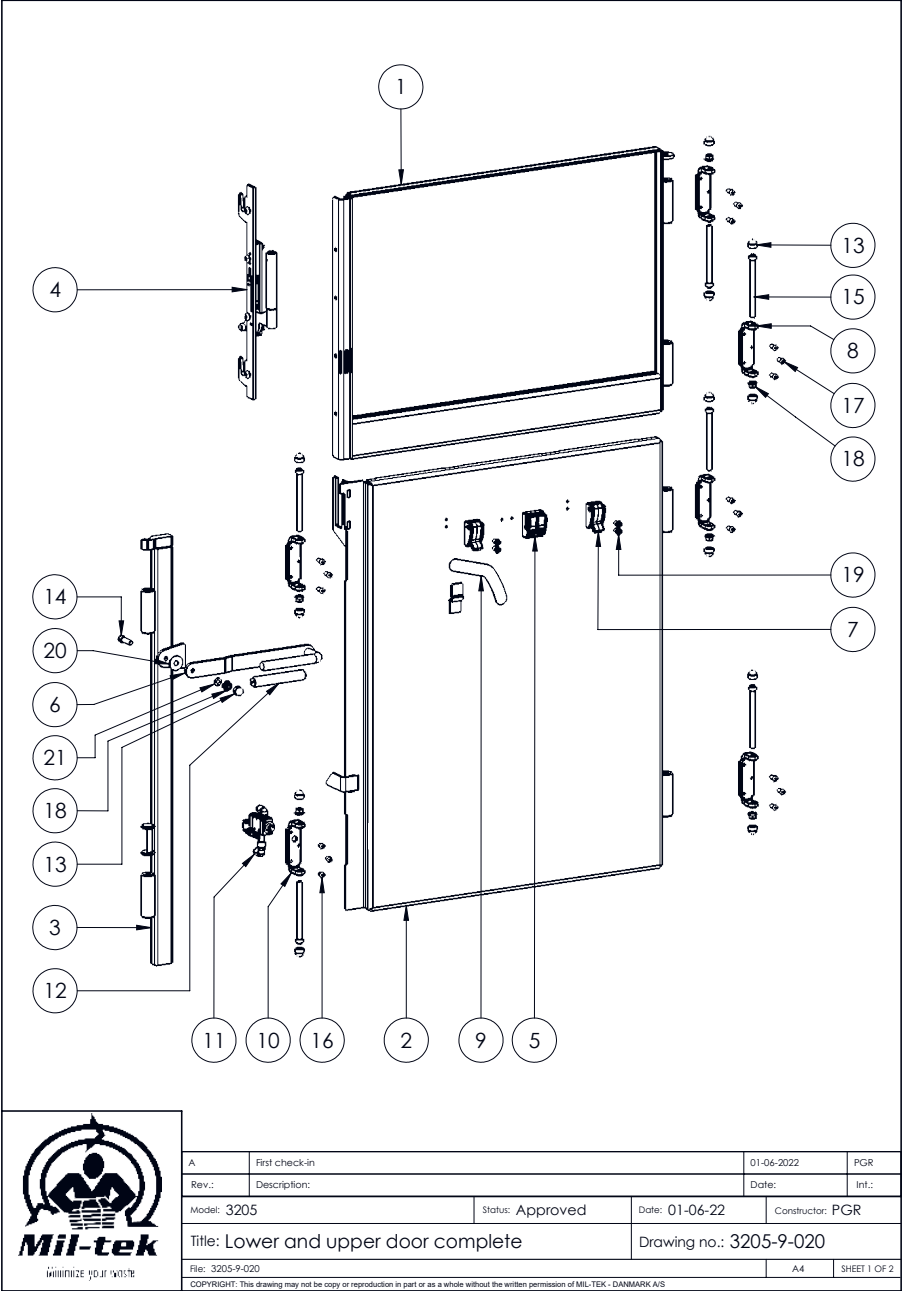
File: 3205-9-010

A4

SHEET 2 OF 2

COPYRIGHT: This drawing may not be copy or reproduction in part or as a whole without the written permission of MIL-TEK - DANMARK A/S

# Lower and upper door, complete drawing

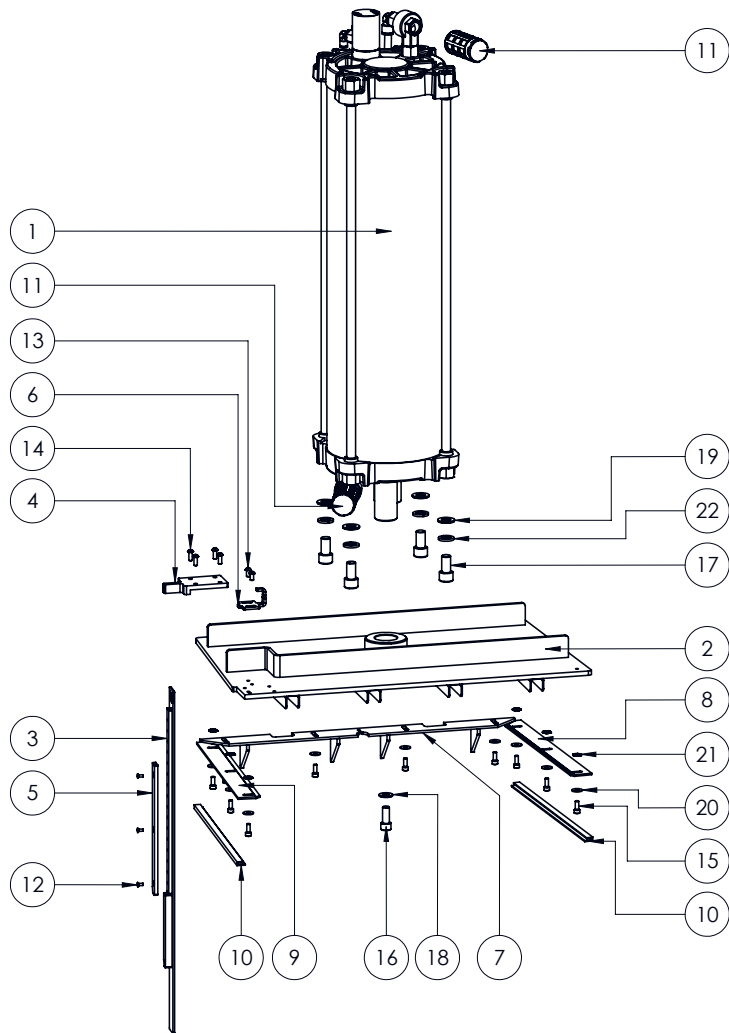


A		First check-in			01-06-2022		PGR	
Rev.:		Description:			Date:		Int.:	
Model: 3205		Status: Approved		Date: 01-06-22		Constructor: PGR		
Title: Lower and upper door complete					Drawing no.: 3205-9-020			
File: 3205-9-020						A4		SHEET 1 OF 2
COPYRIGHT: This drawing may not be copy or reproduction in part or as a whole without the written permission of MIL-TEK - DANMARK A/S								

# Lower and upper door, complete parts list

POS.	QTY.	ITEM NO.	PART NUMBER	DESCRIPTION
1	1	0001300	000-1-300	Upper door
2	1	32051200	3205-1-200	Lower door
3	1	32051401	3205-1-401	Closing hinge
4	1	791031	000-9-540	Upper door locking lever
5	1	Drawing	000-9-986	Band knife
6	1	221301	0-1-800	Handle for lower door
7	2	880545HD	0-1-995HD	Band Holder Front Door"HD"
8	5	775064	0-5-165	Door hinge
9	1	880090	0-5-504	Plastic protector for door
10	1	775063	00-5-164	Door Hinge
11	1	0008V06	000-8-V06	Valve for closing hinge
12	1	880130	0404-5-001	Plastic cover for handle
13	13	224814	002-109-08-000	Nut caps - M8
14	1	770065	001-101-08-030	Hex socket head CH. DIN 912 - M8x30
15	6	770073	001-101-08-120	Hex socket head CH. DIN 912 - M8x120
16	3	769979	002-214-06-010	Torx head BH. - M6x10
17	15	770050	002-214-06-016	Torx head BH. - M6x16
18	7	770530	001-283-08-000	All metal flang lock nut DIN 6927 - M8
19	4	769986A2	001-451-06-012	Lens screws Torx DIN 7985 - M6x12
20	1	771005	001-802-10-000	Thin fender washer - ø10,5x30x1,25
21	1	225300	001-893-08-090	Disc spring washer DIN 2093 - ø8,2x16x0,9

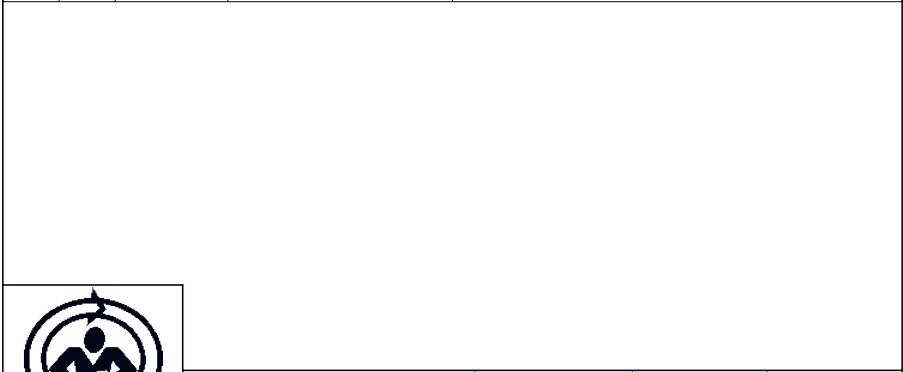
# Cylinder and press plate, complete drawing



A	First check-in	01-06-2022	PGR
Rev.:	Description:	Date:	Int.:
Model: 000	Status: Approved	Date: 01-06-22	Constructor: PGR
Title: Cylinder and press plate complete		Drawing no.: 000-9-100	
File: 000-9-100		A4	SHEET 1 OF 2
COPYRIGHT: This drawing may not be copy or reproduction in part or as a whole without the written permission of MIL-TEK - DANMARK A/S			

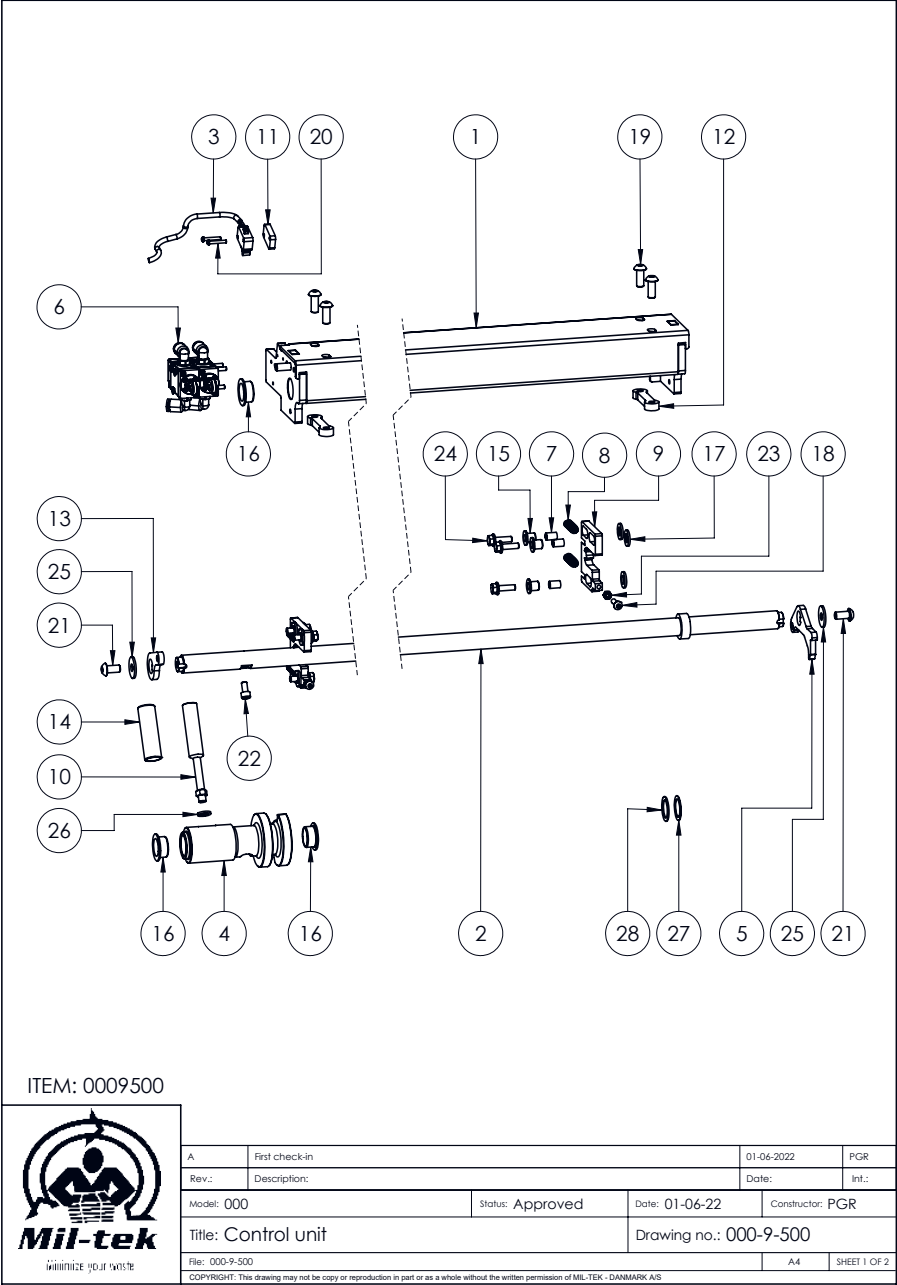
# Cylinder and press plate, complete parts list

POS.	QTY.	ITEM NO.	PART NUMBER	DESCRIPTION
1	1	792000	AMS208261001	Cylinder Ø200 x 600 mm. with double ECO-Valve
2	1	0001110	000-1-110	Press plate
3	1	0001550	000-1-550	Cover
4	1	0005555	000-5-555	Locking pawl for lower door
5	1	0005559	000-5-559	Activation cam
6	1	0005581	000-5-581	Guide for safety dog
7	1	01903	0-1-903	Hook bar, back edge
8	1	05126	0-5-126	Steel edging right
9	1	05127	0-5-127	Steel edging left
10	2	880138	0-5-204	Plastic edging
11	2	222501	2310 U-1 _2	Silencer 1/2"
12	3	769977	002-113-04-010	Torx head UH. - M4x10
13	2	900314A2	002-208-06-012	Torx Pin head BH. - M6x12
14	4	900319A2	002-208-06-016	Torx Pin head BH. - M6x16
15	10	770080	001-101-06-016	Hex socket head CH. DIN 912 - M6x16
16	1	770070	001-101-12-030	Hex socket head CH. DIN 912 - M12x30
17	4	770092	001-101-16-030	Hex socket head CH. DIN 912 - M16x30
18	1	771008	001-820-12-000	Facet washer DIN 125 B - ø13x24x2,5
19	4	771021	001-820-16-000	Facet washer DIN 125 B - ø17x30x3
20	10	771002	001-826-06-000	Fender washer DIN 9021 A - ø6,4x18x1,6
21	6	771014	001-852-08-000	Serrated lock washer DIN 6798 A - ø8,4x15x0,8
22	4	771012	001-877-16-000	Spring washer DIN 127 B - ø16,2x27,4x3,5



Model: 000	Status: Approved	Date: 01-06-22	Constructor: PGR
Title: Cylinder and press plate complete		Drawing no.: 000-9-100	
File: 000-9-100		A4	SHEET 2 OF 2
COPYRIGHT: This drawing may not be copy or reproduction in part or as a whole without the written permission of MIL-TEK - DANMARK A/S			

# Control unit, drawing



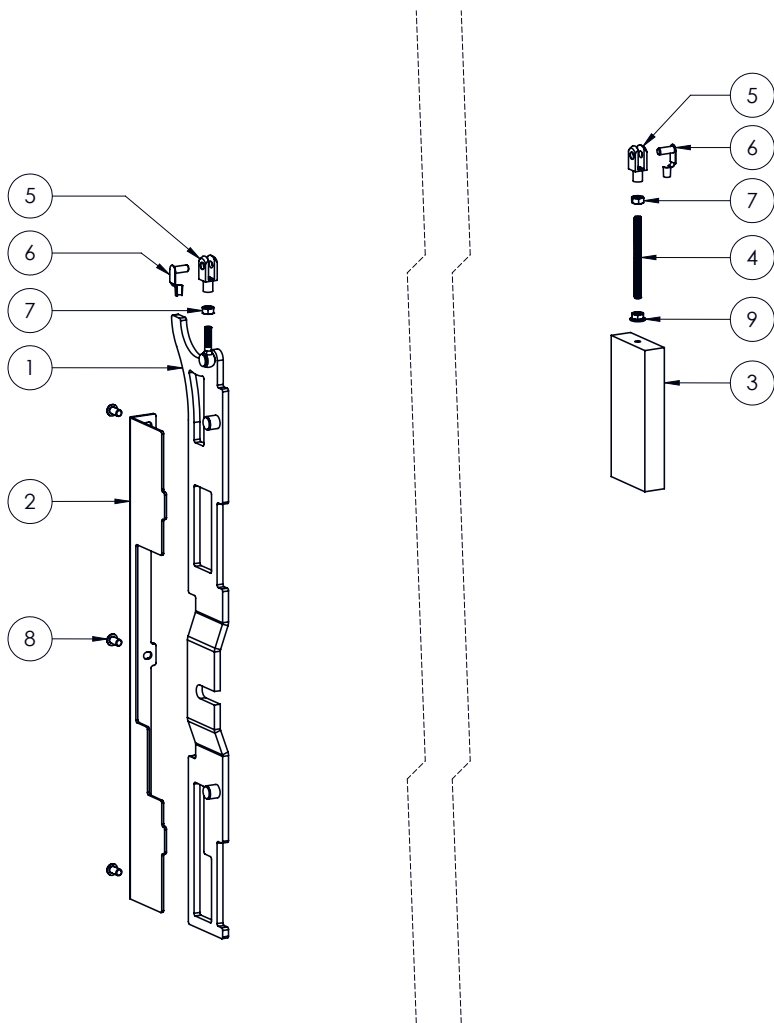
# Control unit, parts list

POS.	QTY.	ITEM NO.	PART NUMBER	DESCRIPTION
1	1	0001500	000-1-500	Console
2	1	0001511	000-1-511	Interlocking shaft
3	1	0005516	000-5-516	Switch for cycle counter with wire
4	1	0005561	000-5-561	Double cam bush
5	1	0005676	000-5-676	Locking pawl No. 2.
6	1	0008V12	000-8-V12	Valves for activation
7	6	700007	00-5-514	Spacer bushing
8	4	700022	00-5-515	Compression spring - 50N
9	2	700044	00-5-525	Lock for interlocking shaft
10	1	700013	00-5-562	Activation handle
11	1	700018	00-5-583	Spacer for switch
12	2	700025	00-5-584	Nut plate 2 x M8
13	1	700014	00-5-671	Arm shaft No. 2.
14	1	880127	0404-5-002	Plastic cover for handle
15	6	690000	002-125-08-001	Sleeve bushing ø8x10x11,5 mm.
16	4	690002	002-125-20-001	Sleeve bushing ø20x23x11,0 mm.
17	6	690003	002-126-10-001	Thrust washer ø10x18x2,0 mm.
18	2	769993A2	002-208-05-020	Torx Pin head BH. - M5x20
19	4	900313A2	002-208-08-020	Torx Pin head BH. - M8x20
20	2	769991A2	002-214-03-020	Torx head BH. - M3x20
21	2	770006	002-214-08-016	Torx head BH. - M8x16
22	1	770084	001-101-06-012	Hex socket head CH. DIN 912 - M6x12
23	2	770528	001-109-05-000	Hex nut DIN 934 - M5
24	6	771045	001-414-06-020	Hex flange bolt DIN 6921 - M6x20
25	2	771003	001-826-08-000	Fender washer DIN 9021 A - ø8,4x24x2
26	1	771013	001-877-08-000	Spring washer DIN 127 B - ø8,1x14,8x2
27	1	771041	001-887-20-050	Shim washer DIN 988 - ø20x28x0,5 mm.
28	1	771042	001-887-20-100	Shim washer DIN 988 - ø20x28x1,0 mm.



Model: 000	Status: Approved	Date: 01-06-22	Constructor: PGR
Title: Control unit		Drawing no.: 000-9-500	
File: 000-9-500			A4
COPYRIGHT: This drawing may not be copy or reproduction in part or as a whole without the written permission of MIL-TEK - DANMARK A/S			
		SHEET 2 OF 2	

# Locking unit, drawing



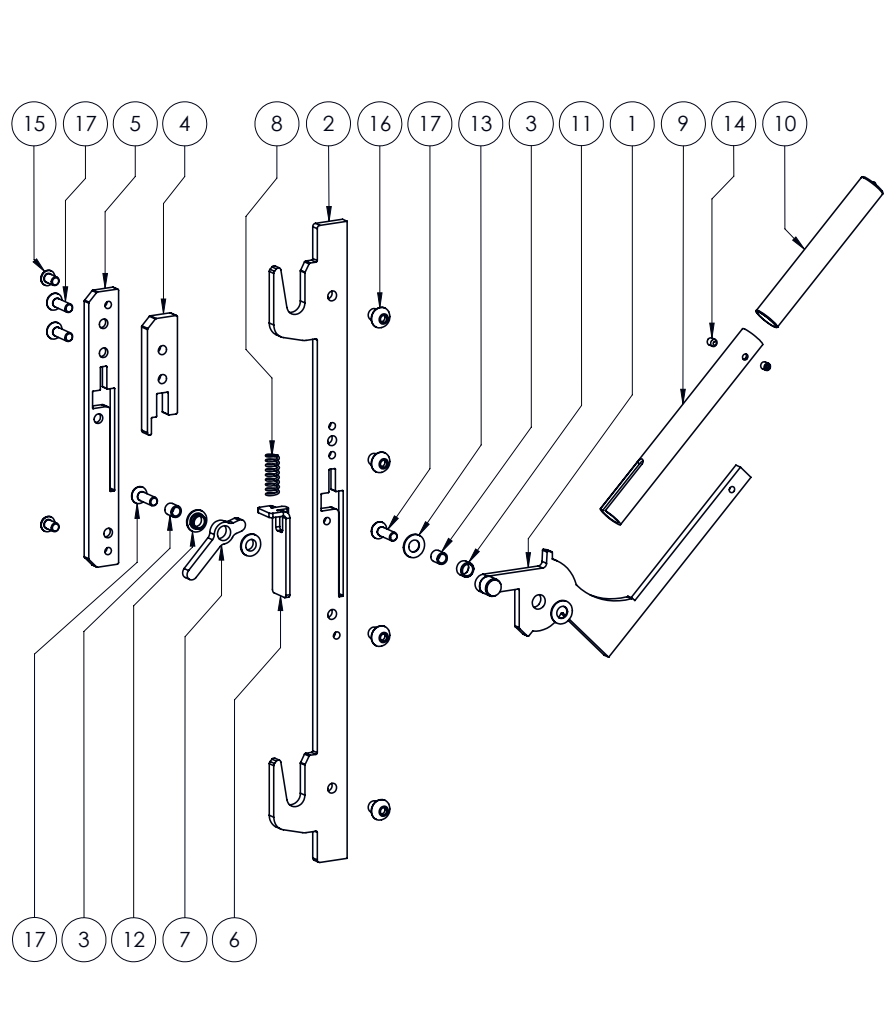
A		First check-in			01-06-2022	PGR
Rev.:		Description:			Date:	Int.:
Model: 000		Status: Approved		Date: 01-06-22	Constructor: PGR	
Title: Locking unit and counterweight				Drawing no.: 000-9-530		
File: 000-9-530					A4	SHEET 1 OF 2
COPYRIGHT: This drawing may not be copy or reproduction in part or as a whole without the written permission of MIL-TEK - DANMARK A/S						




# Locking unit, parts list

POS.	QTY.	ITEM NO.	PART NUMBER	DESCRIPTION
1	1	0001530	000-1-530	Lock for upper door
2	1	0005534	000-5-534	Guide for locking plate
3	1	700045	00-5-565	Counterweight
4	1	700046	00-5-566	Stud bolts (DIN 976) - M6x75
5	2	771067	002-102-06-012	Fork head DIN 71752 - M6x12
6	2	771068	002-103-06-012	ES-bolt - M6x12
7	2	770527	001-109-06-000	Hex nut DIN 934 - M6
8	3	769980	002-214-06-012	Torx head BH. - M6x12
9	1	770514	001-418-06-000	Hex flang nut DIN 6923 - M6

# Upper door locking lever, drawing



ITEM: 791031

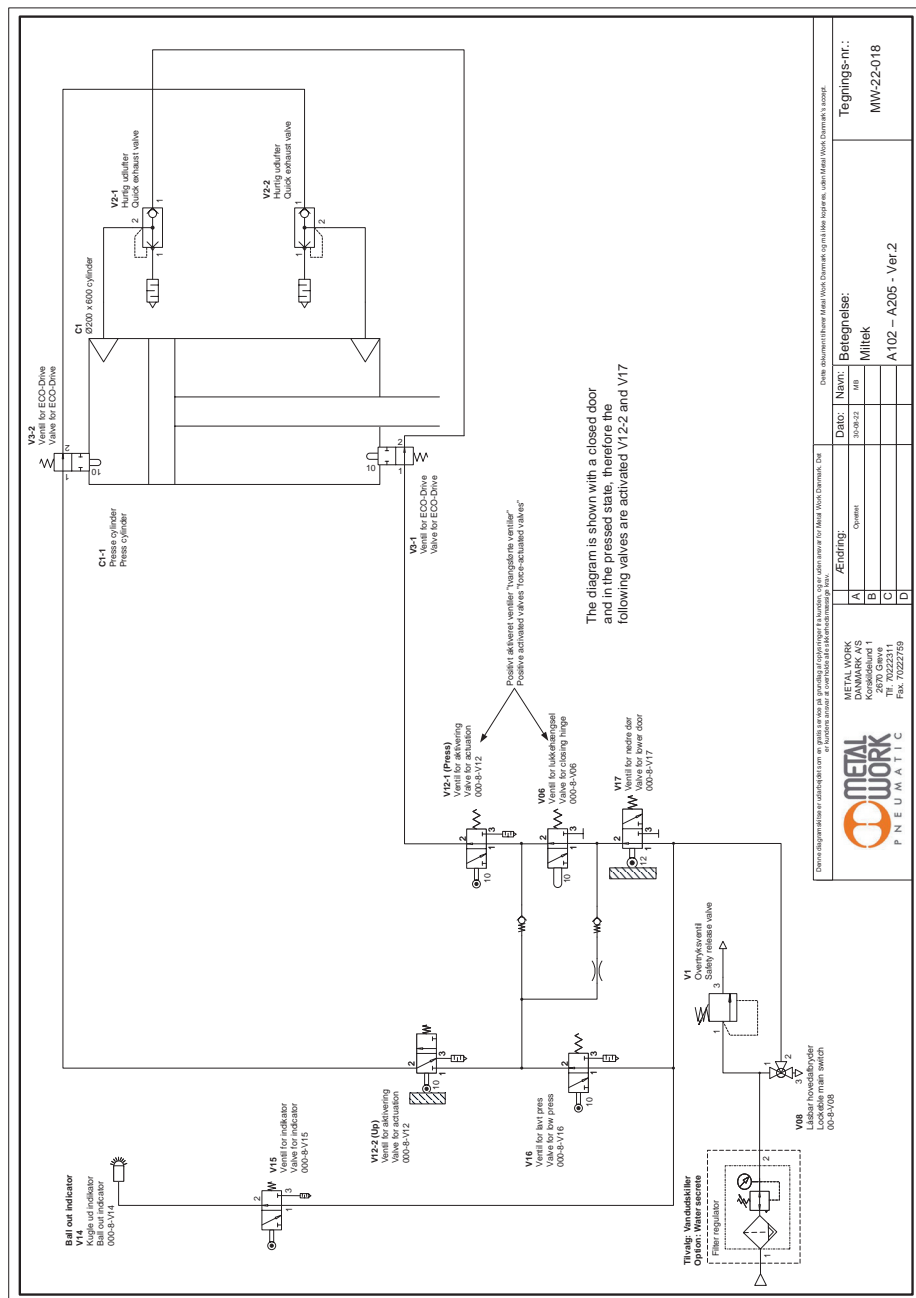


A	First check-in	01-06-2022	PGR
Rev.:	Description:	Date:	Int.:
Model: 000	Status: Approved	Date: 01-06-22	Constructor: PGR
Title: Upper door locking lever		Drawing no.: 000-9-540	
File: 000-9-540		A4	SHEET 1 OF 2
COPYRIGHT: This drawing may not be copy or reproduction in part or as a whole without the written permission of MIL-TEK - DANMARK A/S			

# Upper door locking lever, parts list

POS.	QTY.	ITEM NO.	PART NUMBER	DESCRIPTION
1	1	0001640	000-1-640	Upper door handle
2	1	0005551	000-5-551	Upper door lock hook
3	2	0005645	000-5-645	Center bushing
4	1	0005646	000-5-646	Spring bracket
5	1	0005647	000-5-647	Side plate for lock box
6	1	0005648	000-5-648	Locking pawl
7	1	0005649	000-5-649	Press arm for lock
8	1	700022	00-5-515	Compression spring - 50N
9	1	700009	00-5-544	Tube for handle
10	1	880130	0404-5-001	Plastic cover for handle
11	1	690012	002-124-08-002	Sleeve bearing Ø8/10 x 6 mm.
12	2	690011	002-125-08-003	Sleeve bushing ø8x10x4,0 mm.
13	2	225300	001-893-08-090	Disc spring washer DIN 2093 - ø8,2x16x0,9
14	2	770421	001-105-05-006	Socket set screws DIN 916 - M5x6
15	2	769979	002-214-06-010	Torx head BH. - M6x10
16	4	769996	002-214-08-010	Torx head BH. - M8x10
17	4	769978	002-113-06-020	Torx head UH. - M6x20

## Pneumatic diagram



# Valve for closing hinge, drawing

POS.	QTY.	ITEM NO.	PART NUMBER	DESCRIPTION
1	1	780541	88261K8	Plunger valve 3/2 NO, 1/8"
2	1	780352	2107001	Plug With Exagon Embeddedded, 1/8"
3	3	780030	2L34009	Rotary Elbow, Male, Cylindrical, 1/8" - Ø8
4	1	780307	2118000	Tee, Lateral Female, 1/8" - 1/8" - 1/8"
5	1	880741	W3601000001	Non Return valve, 1/8"
6	1	770881	00-5-985	Disc Springs ø25x13,8x0,8 mm.

Exploded view diagram of a valve assembly. The components are numbered as follows:

- 1: Main valve body
- 2: Plug with exagon
- 3: Rotary elbow (three units)
- 4: Tee, lateral female
- 5: Non return valve
- 6: Disc spring

ITEM: 0008V06

**Mil-tek**  
MINIMIZE YOUR WASTE

A	First check-in	01-02-2022	PGR
Rev.:	Description:	Date:	Int.:
Model: 000	Status: Approved	Date: 01-02-22	Constructor: PGR
Title: Valve for closing hinge		Drawing no.: 000-8-V06	
File: 000-8-V06		A4	SHEET 1 OF 1
COPYRIGHT: This drawing may not be copy or reproduction in part or as a whole without the written permission of MIL-TEK - DANMARK A/S			

# Shut-off valve, drawing

Exploded view diagram of a shut-off valve assembly. The components are numbered as follows:

- 1: Main valve body
- 2: Hex nut
- 3: Elbow fitting
- 4: Tee fitting
- 5: Long straight pipe
- 6: Tee fitting with side port
- 7: Solenoid coil
- 8: Hex nut with upward arrow
- 9: Hex nut
- 10: Pin/bush

ITEM: 790103

**Mil-tek**  
MINIMIZE YOUR COSTS

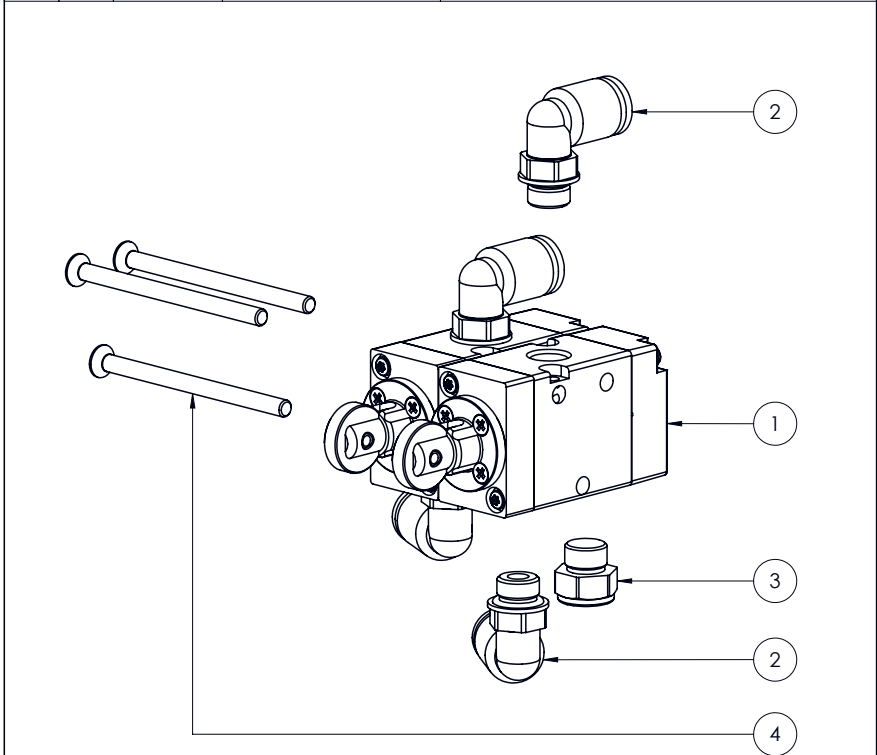
A	First check-in	29-09-2014	PGR
Rev.:	Description:	Date:	Int.:
Model: 00	Status: Approved	Date: 29-09-14	Constructor: PGR
Title: Shut-off valve		Drawing no.: 00-8-V08	
File: 00-8-V08		A4	SHEET 1 OF 2
COPYRIGHT: This drawing may not be copy or reproduction in part or as a whole without the written permission of MIL-TEK - DANMARK A/S			

# Shut-off valve, parts list


POS.	QTY.	ITEM NO.	PART	DESCRIPTION
1	1	780692	5612V102	Shut-off valv, 1/4"
2	1	780364	W0970530052	Silencer MW SFE, 1/8"
3	1	780040	2L34010	Rotary Elbow, Male, Cylindrical, 1/4" - Ø8
4	1	780156	2110002	Elbow, Male-Female, 1/4" - 1/4"
5	1	780372	2150007	Extension, 1/4" - 1/4"
6	1	780381	2117001	Tee, Central Feamale, 1/4" - 1/4" - 1/4"
7	1	222600	400718	Safety release valve
8	1	900549	W3601000002	Non Return valve, 1/4"
9	1	780170	2119007	Hose Adapter, Parallel, 1/4" - Ø12
10	2	769973A2	002-207-05-016	Torx head BH. with flang - M5x16

# Valves for activation, drawing

POS.	QTY.	ITEM NO.	PART NUMBER	DESCRIPTION
1	2	780547	88261K9	Roller valve 3/2 NO, 1/8"
2	4	780030	2L34009	Rotary Elbow, Male, Cylindrical, 1/8" - Ø8
3	2	780364	W0970530052	Silencer MW SFE, 1/8"
4	3	769975A2	002-113-04-060	Torx head UH. - M4x60



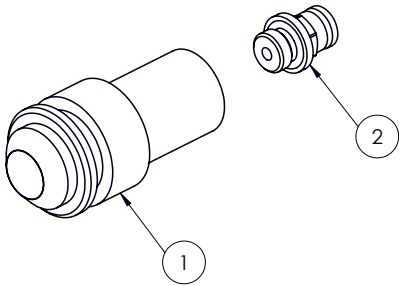
ITEM: 0008V12

	A		First check-in		01-07-2020		PGR	
	Rev.:		Description:		Date:		Int.:	
	Model: 000		Status: Approved		Date: 01-07-20		Constructor: PGR	
	Title: Valves for activation					Drawing no.: 000-8-V12		
	File: 000-8-V12					A4		
COPYRIGHT: This drawing may not be copy or reproduction in part or as a whole without the written permission of MIL-TEK - DANMARK A/S								




# Bale out Indicator, drawing

POS.	QTY.	ITEM NO.	PART NUMBER	DESCRIPTION
1	1	780305	Z30E9915G	Indicator - 99/150G Red/Green
2	1	780005	2L01002	Straight, Cylindrical, Male, 1/8" - Ø4



ITEM: 0008V14

	A		First check-in		01-06-2022		PGR	
	Rev.:		Description:		Date:		Int.:	
	Model: 000		Status: Approved		Date: 01-06-22		Constructor: PGR	
	Title: Bale out Indicator				Drawing no.: 000-8-V14			
	File: 000-8-V14				A4		SHEET 1 OF 1	
COPYRIGHT: This drawing may not be copy or reproduction in part or as a whole without the written permission of MIL-TEK - DANMARK A/S								

# Valve for bale out indicator, drawing

POS.	QTY.	ITEM NO.	PART NUMBER	DESCRIPTION
1	1	780547	88261K9	Roller valve 3/2 NO, 1/8"
2	1	780364	W0970530052	Silencer MW SFE, 1/8"
3	1	780371	2105002	Reducer, Conical, 1/8" - 1/4"
4	1	780156	2110002	Elbow, Male-Female, 1/4" - 1/4"
5	1	780317	2L37010	Central Tee Male Extended, 1/4" - 2xØ8
6	1	780340	2L24004	Y Branch With Adapter, 1xØ8 - 2xØ8
7	1	780020	2L34002	Rotary Elbow 1/8" - 4
8	3	769973A2	002-207-05-016	Torx head BH. with flang - M5x16
9	1	770148	001-013-05-040	Hex head screw DIN 933 - M5x40
10	2	770511	001-418-05-000	Hex flang nut DIN 6923 - M5

10

9

Cut 3 x M5 thread from this side

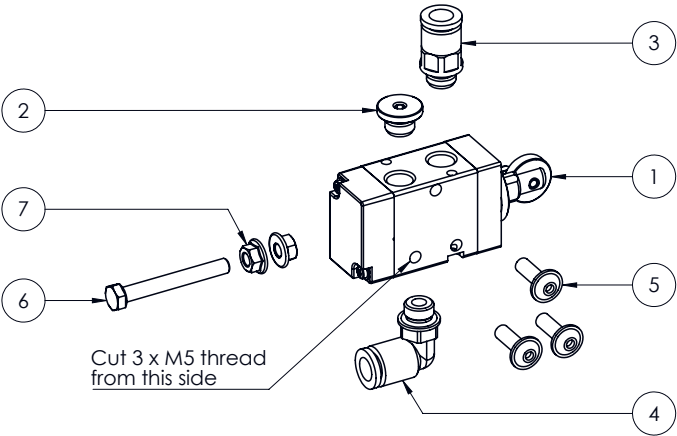
ITEM: 0008V15

A	First check-in	11-11-2022	PGR
Rev.:	Description:	Date:	Int.:
Model: 000	Status: Approved	Date: 01-06-22	Constructor: PGR
Title: Valve for bale out indicator			Drawing no.: 000-8-V15
File: 000-8-V15			A4
COPYRIGHT: This drawing may not be copy or reproduction in part or as a whole without the written permission of ML-TEK - DANMARK A/S			


SHEET 1 OF 2

# Valve for low press, drawing

POS.	QTY.	ITEM NO.	PART NUMBER	DESCRIPTION
1	1	780547	88261K9	Roller valve 3/2 NO, 1/8"
2	1	780352	2107001	Plug With Exagon Embeddedded, 1/8"
3	1	780000	2L01009	Straight, Cylindrical, Male, 1/8" - Ø8
4	1	780030	2L34009	Rotary Elbow, Male, Cylindrical, 1/8" - Ø8
5	3	769973A2	002-207-05-016	Torx head BH. with flang - M5x16
6	1	770148	001-013-05-040	Hex head screw DIN 933 - M5x40
7	2	770511	001-418-05-000	Hex flang nut DIN 6923 - M5

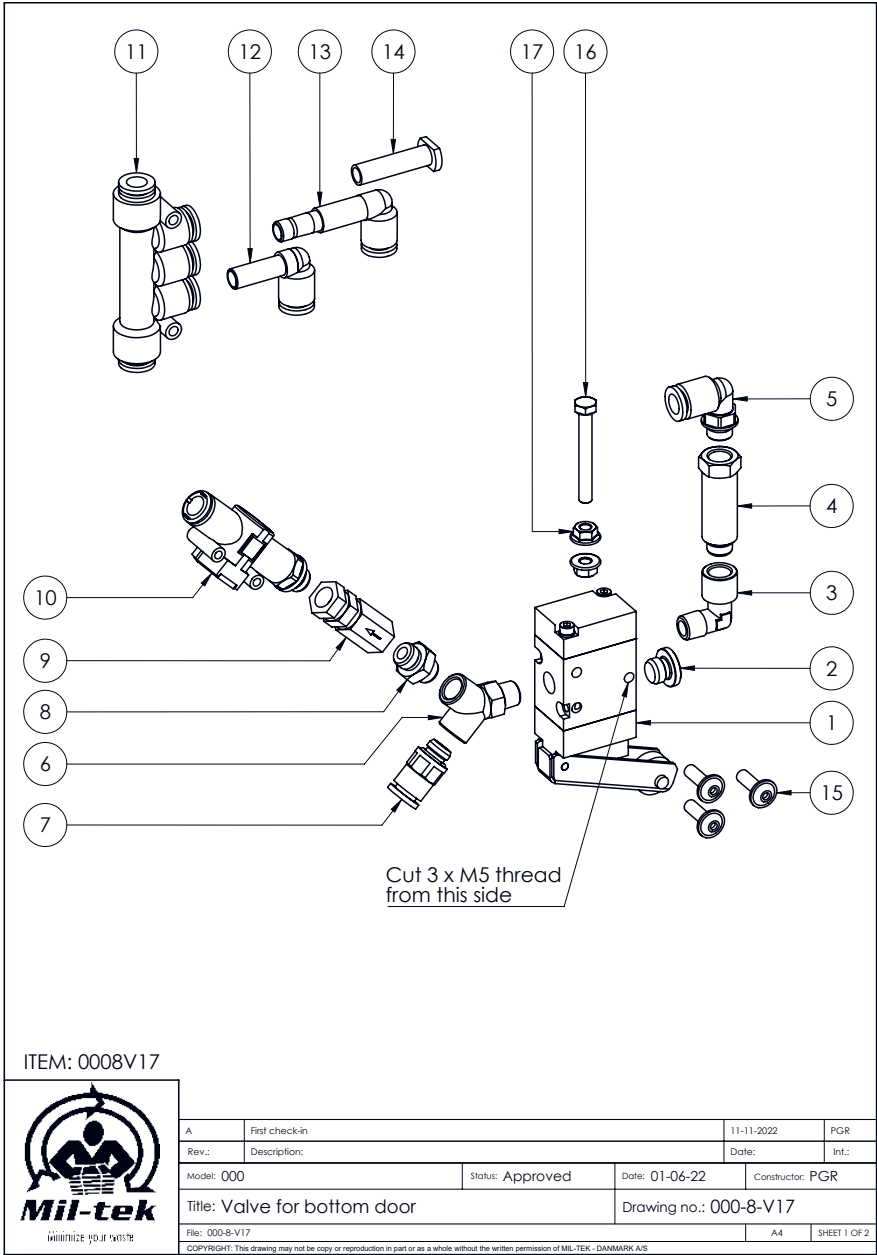


ITEM: 0008V16

	A. First check-in		11-11-2022	PGR	
	Rev.: Description:		Date:	Int.:	
	Model: 000		Status: Approved	Date: 01-06-22	Constructor: PGR
	Title: Valve for low press			Drawing no.: 000-8-V16	
	File: 000-8-V16			A4	SHEET 1 OF 1


COPYRIGHT: This drawing may not be copy or reproduction in part or as a whole without the written permission of MIL-TEK - DANMARK A/S

# Valve for bottom door, drawing



# Valve for bottom door, parts list

POS.	QTY.	ITEM NO.	PART NUMBER	DESCRIPTION
1	1	780546	88261L5	Roller lever valve, 1/8"
2	1	780352	2107001	Plug With Exagon Embeddedd, 1/8"
3	1	780100	2110001	Elbow, Male-Female, 1/8" - 1/8"
4	1	780361	2150004	Extension 42,0 mm., 1/8" - 1/8"
5	1	780030	2L34009	Rotary Elbow, Male, Cylindrical, 1/8" - Ø8
6	1	780280	2124001	Y Male 90°
7	1	780000	2L01009	Straight, Cylindrical, Male, 1/8" - Ø8
8	1	780343	2101001	Nipple, Parallel 1/8" - 1/8"
9	1	880741	W3601000001	Non Return valve, 1/8"
10	1	780285	9070B6308	RFF L thread-pipe bi-direc. ø8 1/8 Nk Ø0.8
11	1	780054	Z30ERP890808	Multiple Manifold Ø8
12	1	780057	2L46003	Plug-in Elbows - Ø8
13	1	780058	2L47003	Extended Plug-in Elbows - Ø8
14	1	780056	2L10004	Plug Ø8
15	3	769973A2	002-207-05-016	Torx head BH. with flang - M5x16
16	1	770148	001-013-05-040	Hex head screw DIN 933 - M5x40
17	2	770511	001-418-05-000	Hex flang nut DIN 6923 - M5



Model: 000

Status: Approved

Date: 01-06-22

Constructor: PGR

Title: Valve for bottom door

Drawing no.: 000-8-V17

File: 000-8-V17

A4

SHEET 2 OF 2

COPYRIGHT: This drawing may not be copy or reproduction in part or as a whole without the written permission of MIL-TEK - DANMARK A/S



# Warranty

---

## WARRANTY

Your Mil-tek product is guaranteed for 12 months from date of installation.

The warranty includes material failure and possible production failure.

The warranty does not cover:

Normal wear and tear, misuse or abuse, or damage by wrong usage.

Whilst under warranty, repairs or adjustments may only be carried out by authorized dealers or their agents using original Mil-tek spare parts. Otherwise, the warranty is invalidated.

Neither is the machine covered by warranty, if a failure is based on bad quality (rust, particles, water) of air supply.

## COPYRIGHT

Copyright of the drawings and Waste Press are property of Mil-tek Danmark A/S.

These user instructions shall remain confidential and shall only be used by authorized people in your company. Transfer to a third party is forbidden. All documentation is protected by the Copyright Act. Dissemination or copying of the documentation, including parts thereof, and use or communication of its contents is forbidden, unless express permission has been given for this. Such a breach of the Copyright

Act will result in prosecution and liability for damages. We reserve the right to exercise the Copyright Act.

# Service check

Date	Done by	Strokes	Remarks

Rating Plate: